



EVERY CHILD CAN ACHIEVE

Luddenham News

office@luddenham.kent.sch.uk

01795 532061

Term 1 – Issue 3 19.09.25

Our focus value this term is Leadership

Miss Case and Mr Wickham have been talking to children in assemblies about what makes a good leader. It's really clear that children can see that Leaders don't just make up the rules and take charge, they build and support others into becoming the best that they can be. It's so important that children realise that are leaders in so many ways. Whether that's on a sports team, in the classroom or at a club. Here at Luddenham, we don't just have the leaders on our Pupil Leadership Team, every child is encouraged to be a leader of their own learning.



It's so important that children know where they are at in their learning and where they are going to next and what they can do about it. It's important that they want to take charge and improve and it's our job to guide and support them.

I am very proud of the team here at Luddenham who lead in their classrooms or wherever they work. They really know their stuff and are doing all they can to nurture and grow our little leaders to champion and support each other.

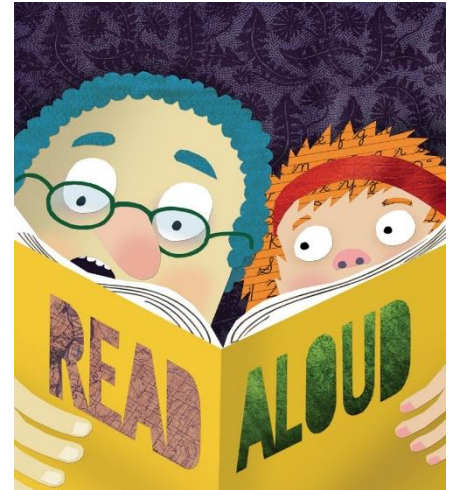
iRock Concert

Thankfully, we had no power cut or any other issue to stop the concert on Wednesday. What a relief! The children did themselves proud. What a concert! Thank you to Amy and the iRock team. We are so proud of our children for giving us one of the best concerts I have seen here at Luddenham. The concentration and determination on the children's faces was a wonder to see. Alongside their bravery in getting up in front of so many people. Congratulations iRockers. It was fabulous 😊



Do you love books?

We currently have a couple of fantastic volunteers who come in to hear our children read. We could really do with some more so every class has someone. So, if you have an hour or more a week to come and hear some children read, we would love to hear from you. Please email the office on office@luddenham.kent.sch.uk with your available time and we can get a DBS check started. Once that's all been approved you can join us. The children love to be listened to read so it would be a huge help if you can or know someone who can give an hour or more a week. Many Thanks



Coats

Children should be bringing a coat every day despite what the weather says please as it's so unpredictable. Remember to name it.



Wellies and Waterproofs

Well done to the majority of Year R and 1 who already have their wellies and waterproofs in school. With the weather continuing to be unpredictable, we ask that you send your child a pair of wellies to stay in school as soon as possible. We have a limited number of spares and their being used up every day, but that means some children can't use the field area. Please send in as soon as you can and make sure they are names clearly.



We are here to help

I know that from time to time there can be some issues between peers, especially when we return from a long break. Children can fall in and out of friendship and it is difficult to navigate. It is important we know about these first.

As a parent, you rightly want things to be better for your child and you want to fix the issue immediately, but it's so important that we get the full picture before taking the next step.

I therefore ask, before contact other parents, that you let us know first. We can liaise with all those involved to get the full picture before deciding the next best course of action for everyone involved.

Often, what you're hearing from your child is only one side of the story and once we piece in the other part or parts it makes far more sense and we can usually resolve and support everyone moving forward.

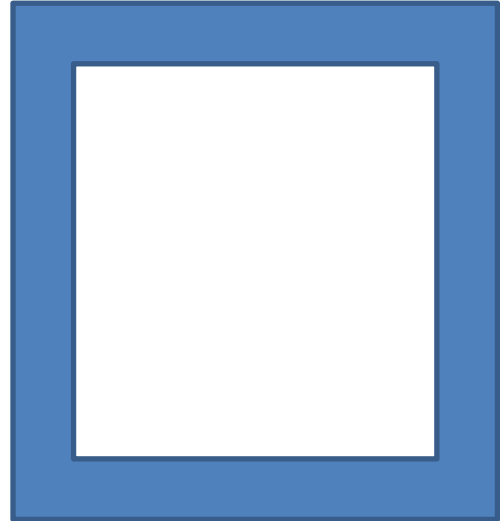
If the other parent needs to know then we will obviously call them and keep them in the loop with all that we know.

So, all I ask is for some patience in allowing us the time to resolve. We want the same as you, for everyone to be happy and safe here at Luddenham.

Superstar Corner...



Let us celebrate together your achievements outside of school this past week. We have no photos this week, please don't forget to send in any achievements your child may have completed in the past week.



Macmillan Cancer support



Macmillan Cancer Support

Friday 26th September

This year we are asking for donations of cupcakes to be brought to school on the morning. Each child will then be offered one cupcake to eat at breaktime.

A fruit alternative will also be available.

Donations to Macmillan Cancer Support can be made via the gateway

Opal Bingo

It's time to start playing Bingo. Your child can earn

Lcrabb@luddenham.kent.sch.uk



Luddenham School Bingo



Pots or pan



Utensils



Plastic cup



Plastic bowl



Dressing up



Wellies



Waterproof coat or trousers



Soft toy or pillow



Cd's



Kettle or a kitchen appliance



Pram or suitcase



School bag



Ball



Magnifying glass



Gloves



Something for the quiet area

If you know anywhere we can get pallets please email me.

Please send your children in with these items or leave them in the Opal donation box!

Thank you

Above, we have some items we need for our playground!

1 row= 3 house points

2 rows= 5 house points

3 rows= A dip in the lucky box


4 rows= 3 Dips in the lucky box

LSFA News

Disco Party Bingo Night!


Join us for an exciting evening of entertainment with **Disco Party Bingo!** Ditch the numbers and mark off the iconic anthems from your Disco Party Bingo game card for the chance to win **cash prizes!** The more tickets we sell, the bigger the cash prizes will be and the more we raise for our school!

 **Venue:** The Alexander Centre, Faversham, ME13 8NZ

 **Date:** Friday 23rd January 2026


 **Doors open:** 7:00PM

 **First game starts:** 8:00PM

 **Tickets:** £15.00 + booking fee

 For more information and booking, visit:

<https://www.ticketsource.co.uk/discopartybingo/t-vvlrxmp>

 **Booking info:** When booking, there will be a password box – please enter **HURRICANE**. The prompt will say *'Red House Team'*. This password can be shared with friends and family; it's simply to ensure the event is kept for our Luddenham School community.

Grab your friends and family and enjoy a brilliant night out—all while raising money for our school. It's not one to miss!

LSFA Annual General Meeting – Reminder

Monday 22nd September - 7:30pm - The Sun Inn, Faversham (lounge area to the left of the bar, through the front entrance)

At the meeting we will:

- Review last year's fundraising and events
- Share plans and fundraising goals for the year ahead
- Re-elect the key committee roles

All parents are welcome – it's a great opportunity to get involved and help us make sure our fundraising continues to benefit all the children at Luddenham.

LUDDENHAM SCHOOL FRIENDS ASSOCIATION



FUNDRAISING FOR

Friday 23rd
January
8pm
(Doors 7pm)



Tickets
£15
Tickets include your
Bingo stake



www.discopartybingo.com

Monday 22nd September

Year 4 Meet the teacher

2:45pm – parking on site available 2.40pm.

Tuesday 23rd September

Year 6 Meet the teacher

2:45pm – parking on site available 2.40pm.

Thursday 2nd October

Flu Vaccinations – Whole School

Friday 3rd October

School Photos – Individual

Friday 10th October

Rangers Day 1 Y1,Y2,Y3,Y4 & Y5

World Mental Health day – Wear Yellow

Monday 13th October

Year R Share the Learning teacher

2:45pm – parking on site available 2.40pm.

Tuesday 14th October

Year 6 Share the Learning teacher

2:45pm – parking on site available 2.40pm.

Wednesday 15th October

Year 2 Share the Learning teacher

2:45pm – parking on site available 2.40pm

Friday 17th October

Rangers Day Y6 & YR

END OF TERM

Monday 27th October

INSET DAY – School Closed

Tuesday 28th October

START OF TERM.

Wednesday 29th October

EYFS & KS1 Halloween Disco 3:30 – 5:00pm

Thursday 30th October

KS2 Halloween Disco 3:30 – 5:00pm

Remember if you are not sure of something, then please give us a call on 01795532061

or send us an email using office@luddenham.kent.sch.uk or direct to the class teacher and ask that question! We're always happy to help.

Wishing you all a
wonderful weekend
when it arrives





Online Parent Workshops

Aimed at parents of children in primary school

Supporting Your Child with Worries & Fears 7/11/2025 10:30—12:30pm



Introduction to Understanding Autism 8/10/2025 17:30—19:30pm



Understanding Your Child's Behaviour 30/09/2025 12:30—14:30pm



The Mind, The Body and You 9/12/2025 12:30—14:30pm



Me & My Child: Understanding Resilience 25/11/2025 10:30—12:30pm



Understand ADHD 20/11/2025 10:30—12:30pm



**Workshop times alternate from term to term*

Our online workshops offer information around key topics to help understand what is going on for your child and strategies to support them, based on the latest evidence and practice.

If you would like to join, please raise your interest with your child's school so that they can send you the link. If you have any questions please speak to your child's school.

Our workshops are held on Microsoft Teams. You do not need an account to join. You will need access to the internet. Currently, this workshop is only available to parents/carers of children attending a EWT/EST school. Please speak to your child's school or check our website for our list of schools. If you require materials in another language or have any other

access needs then please email: EWTandESTenquiries@neft.nhs.uk

