



EVERY CHILD CAN ACHIEVE

Luddenham News

office@luddenham.kent.sch.uk

01795 532061

Term 1 – Issue 1 05.09.25

Welcome back!



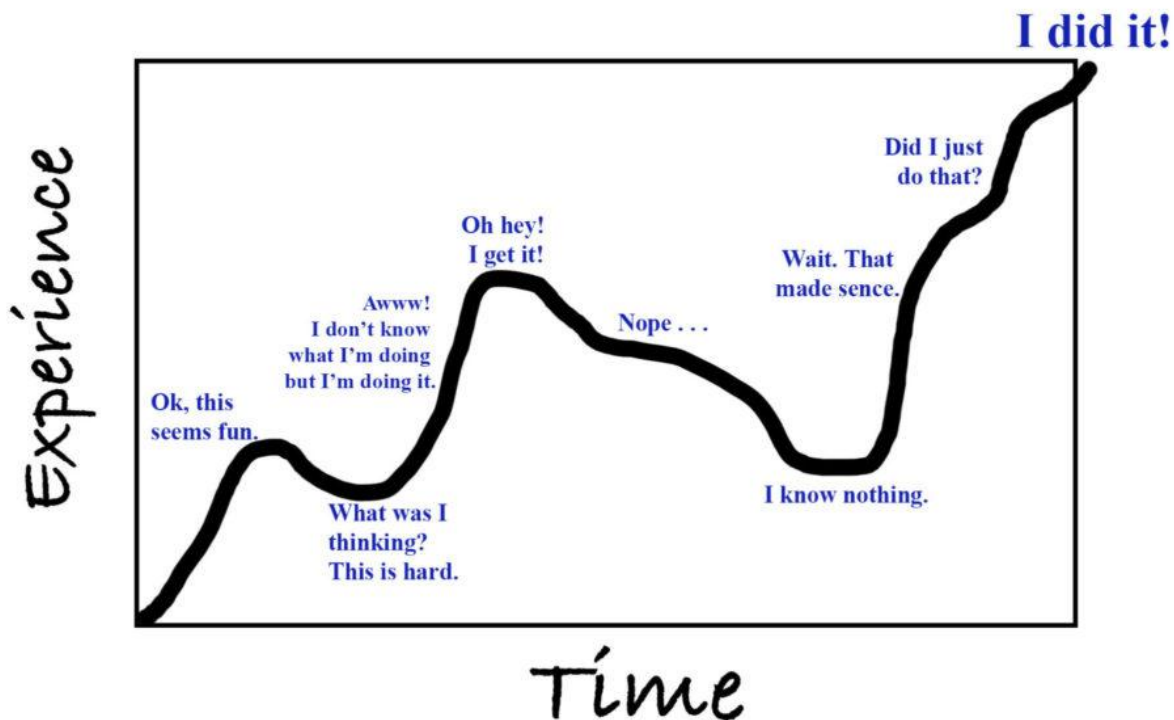
It is so wonderful to have everyone back in school. The atmosphere is just lovely and something I wish I could bottle. So many happy and smiley faces and so many children ready to learn the next part of their journey. Unfortunately, mother nature didn't get the memo and we've had to battle several heavy showers this week, but that doesn't put a dampener on our faces! Just remember those coats (name them!) please as they certainly will need them as we do like to get out in most weathers.



Why does Attendance Matter?

I attended my daughters Year 10 information evening on Wednesday evening and it was great to hear them talk about how we learn. Did you know that learning looks like this?

The Learning Curve

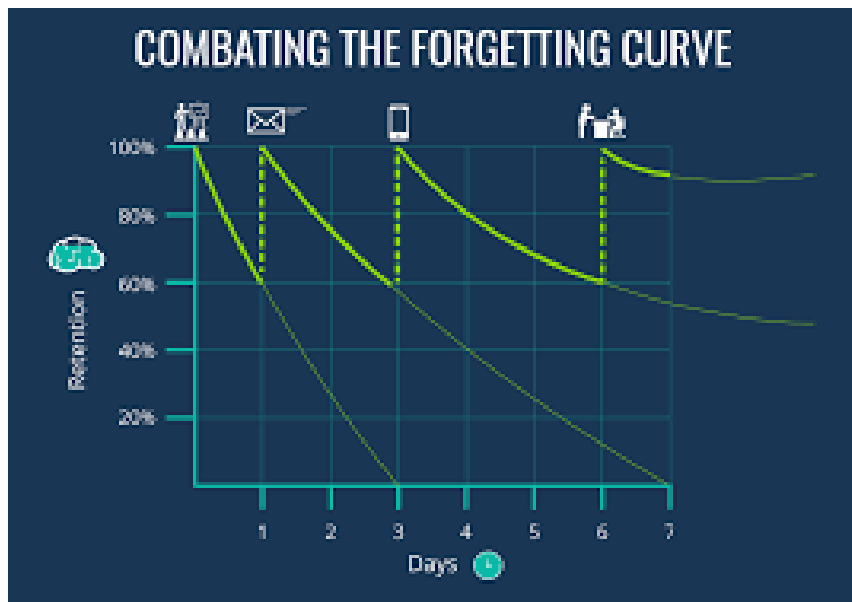


www.theexcitedwriter.com

You may recall last year we introduced the Learning Pit. Explaining that learning is meant to feel uncomfortable and takes time. We learn in chunks, small bits that build over time and connect together. In just missing a day of school, your child missed 5 hours of learning and 5 chunks of learning for 5 different subjects. Without that important piece the next lesson will be even harder. Now if that were a

week's holiday and they've missed 25 hours of learning and interrupted the learning journey of about 13 subjects. That can't be 'made up' easily. Your child will have to work incredibly hard to try and keep up. The teaching team will of course do their best but it will be a huge effort.

Sadly, I have already had holiday requests. I can imagine you're thinking, 'it's ok it won't affect them it's the start of the year.' Learning builds year on year. It's our job to sequence it so it builds and most importantly sticks. We refer back to previous learning because without doing that, it is forgotten. So we build in retrieval activities because unless you come back to the knowledge or skill it is forgotten.



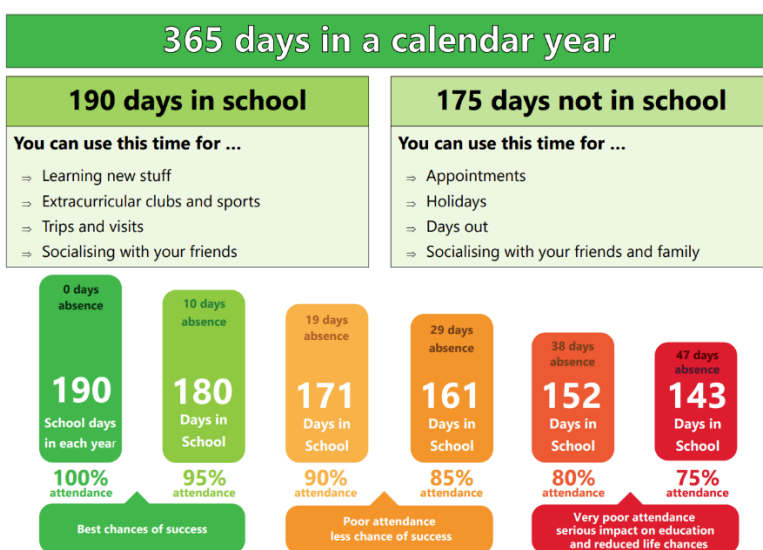
This is Ebbinghaus' Forgetting Curve. It shows that we can learn something, but if we don't come back to it over time then it is forgotten.

You'll know this from your own experience. At Primary and Secondary school, you learnt heaps of things. Many of which you have now forgotten because you've not had to think about it. The connectors in our brain now have weakened and disappeared. It's ok you don't need it, but until your child has chosen their path they need it all to make an

informed decision. To find out what they are good and what interests them.

We don't want this for your child. We know that 'Every child can achieve', it is our job to support them in that and we can't do that if they are not here.

So, I ask for you to think carefully before taking that day or week. Each lesson really does matter. You may not understand why, but we have trained for years and have heaps of experience to know why. That's our job. Obviously, genuine illness is unavoidable but so many other things are. So let's make this year and the next the best it can be for our children, because they really do deserve it.



The Department of Education has asked me to share a letter from the Prime Minister with you. You can find it here: [Prime Minister's letter to parents and carers on Best Start in Life – The Education Hub](#)



WATER PLAY

Starting this year at
Luddenham
the children have shown
interest in waterplay!

In order to get this
underway, we would
really appreciate some
donations.

Anything you think
would suit being used for
water play would be
perfect



Anything like buckets, jugs,
funnels...

If you would like to ask feel
free to email at

lcrabb@luddenham.kent.sch

uk

Superstar Corner...

Please don't forget to send in photos of your child's achievements

LSFA News

We hope everyone had a lovely summer! The LSFA are now getting back into the swing of things, ready to raise money and make more great memories for our school again this year.

LSFA Annual General Meeting

The LSFA plays a vital part in our school community, and all parents are invited to attend the **Annual General Meeting (AGM)**. This is your chance to hear and see how the funds you have helped to raise have been used for the benefit of the children at Luddenham.

Date: Monday 22nd September

Time: 7:30pm

Venue: The Sun Inn, Faversham (lounge area to the left of the bar, through the front entrance)

At the meeting we will discuss:

- How much money and how the money was raised last year
- A review of last year's events
- Plans for what we would like to spend money on this year
- Upcoming fundraising goals for the year ahead
- Which events will take place this year

We are pleased to share that **Mrs Vincett, the Headteacher**, will be joining us for the AGM. We have a great relationship with the school, working together to ensure events run smoothly and that everything we do is in the best interests of the children.

If you'd like more information about becoming a committee member or attending the AGM, please speak to **Hannah (Chair of the LSFA)** or email: Luddenhamschoolfriends@gmail.com.

SAVE THE DATES – Halloween Discos 🎃 👻

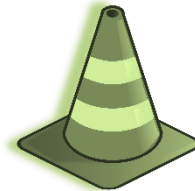
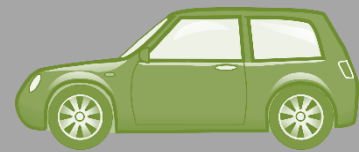
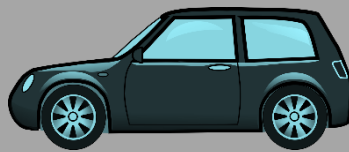
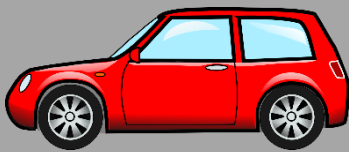
- **EYFS & KS1:** Wednesday 29th October 3:30pm – 5:00pm
- **KS2:** Thursday 30th October 3:30pm – 5:00pm

More information will be shared soon!

Car Queue Reminders

Following on from my email earlier this week.

- Please **do not arrive before 3.15pm** for this afternoon's car queue and avoid blocking the lane.
- Please **stay on the road** and not mount the 'apron' area as children and staff will be standing there.
- Remember it is going to take a little longer for the first few days as our new families get used to the routines. Be patient.
- Remember to pull forward if you are the first car at the cones to allow the other 2 to fit in behind you. The front of your car may pass the wall, but we just need to get to the door. See image below.



Apron

- Please avoid getting out of your car - use the layby just past the school to do up seat belts if you can.
- Local roads are narrow and have many blind spots - Please SLOW DOWN and drive safely.
- Remember to let Mrs Williams know in the office before 3pm if there is someone different collecting your child. Call on 01795532061 or email office@luddenham.kent.sch.uk



Thursday 11th September

Year 6 Kent Test (only those who have registered in advance)

Monday 15th September

Year R Meet the teacher 2:45pm – parking on site available from 2.40pm.

Tuesday 16th September

YR, Y1, Y2 Parent Phonics Meeting 5:00pm

Wednesday 17th September

Year 3 Meet the teacher
2:45pm – parking on site available from 2.40pm.

iRock Concert 9:15 am – parking on site available after car queue at 9am.

Thursday 18th September

Year 2 Meet the teacher
2:45pm – parking on site available 2.40pm

Friday 19th September

Year 1 Meet the teacher
2:45pm – parking on site available 2.40pm.

Monday 22nd September

Year 5 Meet the teacher
2:45pm – parking on site available 2.40pm.

Tuesday 23rd September

Year 4 Meet the teacher
2:45pm – parking on site available 2.40pm.

Thursday 2nd October

Year 6 Meet the teacher
2:45pm – parking on site available 2.40pm.

Friday 3rd October

Flu Vaccinations – Whole School

Friday 10th October

School Photos – Individual

Tuesday 14th October

Rangers Day 1 YR,Y1,Y2,Y3,Y4 & Y5
World Mental Health day – Wear Yellow

Wednesday 15th October

Year 6 Share the Learning teacher
2:45pm – parking on site available 2.40pm.

Friday 17th October

Year 2 Share the Learning teacher
2:45pm – parking on site available 2.40pm

Monday 27th October

END OF TERM

Tuesday 28th October

INSET DAY – School Closed
Rangers Day Y6

START of TERM.

Recycling at Luddenham

Don't forget that we are collecting bakery items to be recycled. Either pop into the main porch at the main office and drop them off in the bin before the main door or hand to staff in car queue. Thank you.



The Warburtons Bakery Recycling Programme



yes

- ✓ Any brand of plastic bread bags and closure tags
- ✓ Any brand of bakery plastic packaging (e.g. plastic trays, zipper bags, plastic packs, etc.)

no

- ✗ Paper bags
- ✗ Combined paper and film window bags
- ✗ Wax wrap

When in doubt, leave it out.

Learn more at [terraCycle.com/warburtons-uk](https://www.terraCycle.com/warburtons-uk) or scan QR code





Baby, Family and You

using Triple P for Baby



Are you a parent-to-be or parent with a baby up to 12 months old?

These sessions, delivered in a group setting, give you practical strategies to create the best environment for your baby's development – and feel more confident in your parenting journey. Gain ways to cope with frequent crying, set up good sleep habits, read your baby's cues, look after yourself, adapt to changes in family life, and more.

Get your Baby, Family and You off to a positive start!

DATE: Wednesday 17th September 2025 for 4 weeks

TIME: 13:00 - 15:00

VENUE: Murston Family Hub, Tonge Road, Sittingbourne, ME10 3NT

DATE: Wednesday 5th November 2025 for 4 weeks

TIME: 13:00 - 15:00

VENUE: Bysing Wood Family Hub, Lower Road, Faversham, ME10 7NU

To book your space please email Swalefh@kent.gov.uk

You are welcome to bring your baby along, we have a baby friendly environment set up within the room.

Visit your local Family Hub today

www.kent.gov.uk/familyhub





Swale Family Hubs Timetable

1st September - 12th December 2025

For more information or to book email:
SwaleFH@kent.gov.uk

Our Family Hubs and locations:

Woodgrove Family Hub
Johnson Road
Sittingbourne
ME10 1JS
03000 420898

Sheppey Gateway
38-42 High Street
Sheerness
ME12 1NL
01795 417850

All of our groups and services are free to attend.

Monday

Tuesday

Wednesday

Thursday

Friday

Woodgrove Family Hub

District Conversations
9:00 - 11:00

Book Worms
1-5yrs
6th Oct for 3 wks
13:30 - 14:30

SEND Stay and Play
Birth-5yrs
10:00 - 11:00

Healing Together
4th Nov for 6 wks
8 - 11yrs
16:00 - 17:30

Baby Massage
3rd Sep for 4 wks
1st Oct for 4 wks
29th Oct for 4 wks
10:00 - 11:00

Stay and Play
Birth-5yrs
13:30 - 14:30

Baby Steps
For expectant parents
until walking
10:00 - 11:00

Strengthening Family Relationships
13th Nov
10:00 - 13:00

Young Parents
Up to 25 yrs
13:30 - 14:30

Breast-Feeding Support
Drop-in Session
9:30 - 11:30

Making It REAL
5th Sep for 4 wks
2-5 yrs
10:00 - 11:00

Family First Aid
12th Sep for 3 wks
12:30 - 14:30
(Creche Available)

Sheppey Gateway

Our Family Scrapbook
3rd Nov for 4 wks
12:30 - 14:30
(Creche Available)

Baby Massage
28th Oct for 4 wks
10:00 - 11:00

Compass
Seashells Family and Children's Centre
11-19yrs (25yrs with SEND)
16:00 - 17:30

Stay and Play
(Activity Roundabout)
Barton's Point Coastal Park
2-5yrs
10:00 - 11:00

District Conversations
10:30 - 12:30

Young Parents
Up to 25 yrs
13:30 - 14:30

Please Note: Signing in will not be available until 10 minutes before the session starts.

www.kent.gov.uk/familyhub

Family Hub Sites are run by Kent County Council



September to December 2025

Venue	Course Title	Start	Day	Start Time	End Time
Woodgrove FH	Family First Aid (with creche)	12th - 26th September	Friday	12.30pm	2.30pm
Byssing Wood FH	Puppet Making (children aged 3yrs-5yrs)	16th September	Tuesday	9.30am	11.30am
Milton Court FH	Understanding You Teenager	18th Sept - 9th Oct	Thursday	9.30am	11.30am
Woodgrove FH	Autism Awareness (with Creche)	3rd - 17th Oct	Friday	12pm	2pm
Milton Court FH	Cooking on a Budget (children aged 5yrs-11yrs)	21st October	Tuesday	1.30pm	3.30pm
Leysdown FH	Confident Parent, Confident Child (with creche)	7th-28th November	Friday	12.30pm	2.30pm
Sheppey Gateway	Our Family Scrapbook (children aged 3yrs-5yrs creche 1st hour)	3rd-24th November	Monday	12.30pm	2.30pm
Online	Supporting Your Child's Anxiety	3rd December	Wednesday	7pm	9pm

To help us provide the best possible experience for you, please let us know if you or your child have any disabilities or particular support needs.

To book your place on one of these FREE courses, please contact:

Email: swalefh@kent.gov.uk

Go online: [KAE Family Learning](https://www.kentadulteducation.co.uk)



Kent Adult Education is part of Community Learning and Skills

[kentadulteducation.co.uk](https://www.kentadulteducation.co.uk)

Bringing learning to life